

mgm A12 Low Code Platform

PARTNER PROGRAM

Contact
Hanna Purschke

München/HQ Aachen Bamberg Berlin Đà Nẵng Dresden Geretsried Grenoble Hamburg Hồ Chí Minh City Köln Landshut Leipzig Nürnberg Porto Praha Salzburg Stuttgart Washington



Innovation Implemented.



A12 Partner Program

Welcome to the world of A12!

With the A12 Partner Program, mgm opens up the A12 Enterprise Low Code Platform and a proven software development methodology to more companies – laying the foundation for the widespread adoption of the low code approach to full-blown enterprise software.

At mgm, we believe that by sharing our award-winning A12 Platform, we can help create a new ecosystem that fosters new business opportunities and mutual growth. With your support, we will expand a growing ecosystem around A12 and establish low-code business applications as the new industry standard.

Our current A12 partners:



mgm A12 Enterprise Low Code Platform

A shared development platform for teams from both business and IT.
Created for professional enterprise applications in complex IT environments.
Less risk. More control. Higher efficiency.

01



What is A12?

A platform for the development of complex web apps for sales, CRM, logistics, procurement, ERP, HR, business departments and administration.

Low Code Tools for data modeling, user interfaces, calculations, print pieces, workflows

Toolbox of components and process models

Techstack: Java, Typescript, React, Kubernetes

02



Who is A12 for?

For all companies that want to implement complex applications themselves in agile teams:

Business Teams can design large parts of the application independently of IT.

Development Teams can work in the familiar Java development environment. Code, test & deploy in automated infrastructure. Quality & security processes for code and low-code integrated.

03

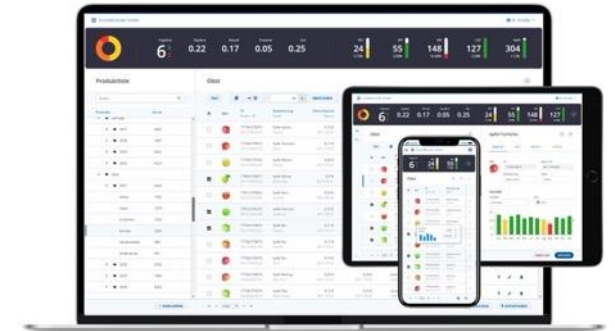


Why A12?

Less Risk in projects and development: availability of proven development and procedural models from 30 years of enterprise software development; directly usable and adaptable components.

More control: Platform and know-how fully under own control, strengthening of own digital competence.

Higher efficiency: Low code, high automation approach.



Languages	UI	App Server	Persistence	Infrastructure & Containerization
TypeScript	React	Apache Tomcat	MySQL	Ansible, Docker, HELM, Jenkins, Kubernetes, Terraform
Java	Chart.js	Jetty	Solr	Git, Helm, Jenkins, Kubernetes, Terraform
Kotlin	Redux	WildFly	Camunda	Ansible, Docker, HELM, Jenkins, Kubernetes, Terraform
ANTLR	Redux-Saga	Spring		Ansible, Docker, HELM, Jenkins, Kubernetes, Terraform

Being used by: Allianz, Bayerisches Landesamt für Steuern, LIDL, Geerberg, HDI, CHEFS CULINAR, SAB, hendricks

Why partner with mgm?

01

Access to the A12 world

Unlock the power of partnership with us and gain exclusive access to our award-winning A12 Low Code Platform and its comprehensive suite of benefits.

Experience the community around A12, along with tailored role-specific onboarding and training, all conveniently accessible through the dedicated „GetA12“ website.

Join us to discover the full potential of A12 together!

02

Reduce Time to market

Drawing upon decades of software development expertise, mgm crafted a Low Code Platform which empowers its users to *model* large parts of a software solution. By improving the collaboration between business analysts and developers, A12 reduces the time to market! This offers you a substantial competitive edge in comparison to classic software development.

Seize this advantage today!

03

Expand your network

Partnering with us opens doors to all kind of new business opportunities – be it in the low code segment or beyond.

Collaborating with a well established IT company allows you to leverage a broad customer base and jointly explore well known and untapped markets.

Let's shape the future of low code software development!



Current A12 partners

attempto
Das A & O in Business + IT

Capgemini

Computacenter

EITCO

Opentalk

OPEN
KNOW
LEDGE

STRIPED
GIRAFFE

q.beyond

ventus



Partnership models: Overview

mgm offers different partner types within the A12 Partner Program.

The following graphic provides you with a short overview of all types, the corresponding responsibilities and requirements.

Partner Type	Services / Responsibility	Resources
A12 Modeling Partner	Creates models within a project / solution (extended workbench)	Domain specific knowledge, certified Analysts (3)
A12 Development Partner	Supports development in A12 based projects (extended workbench)	Technical knowledge, certified Developers (3)
A12 Solution Partner	Develops A12 based projects / solutions with modelers and developers	Domain specific and technical knowledge, certified Analysts (3), Developers (4), DevOps (2), QA (2)
A12 Platform Partner	Can handle (set up, develop, run) complete A12 projects	Domain specific and technical knowledge, certified Analysts (3), Developers (4), DevOps (2), QA (2) Data Centre
A12 Reseller <i>(Also compatible with all partner types)</i>	Sells A12 based solutions	Domain specific and technical knowledge, Sales Network & Team

Additionally mgm offers:

- **A12 OEM Partnerships** for interested software companies to build product solutions based on A12.
- **A12 Technology Partnerships** for complementary software products to integrate with A12 solution.



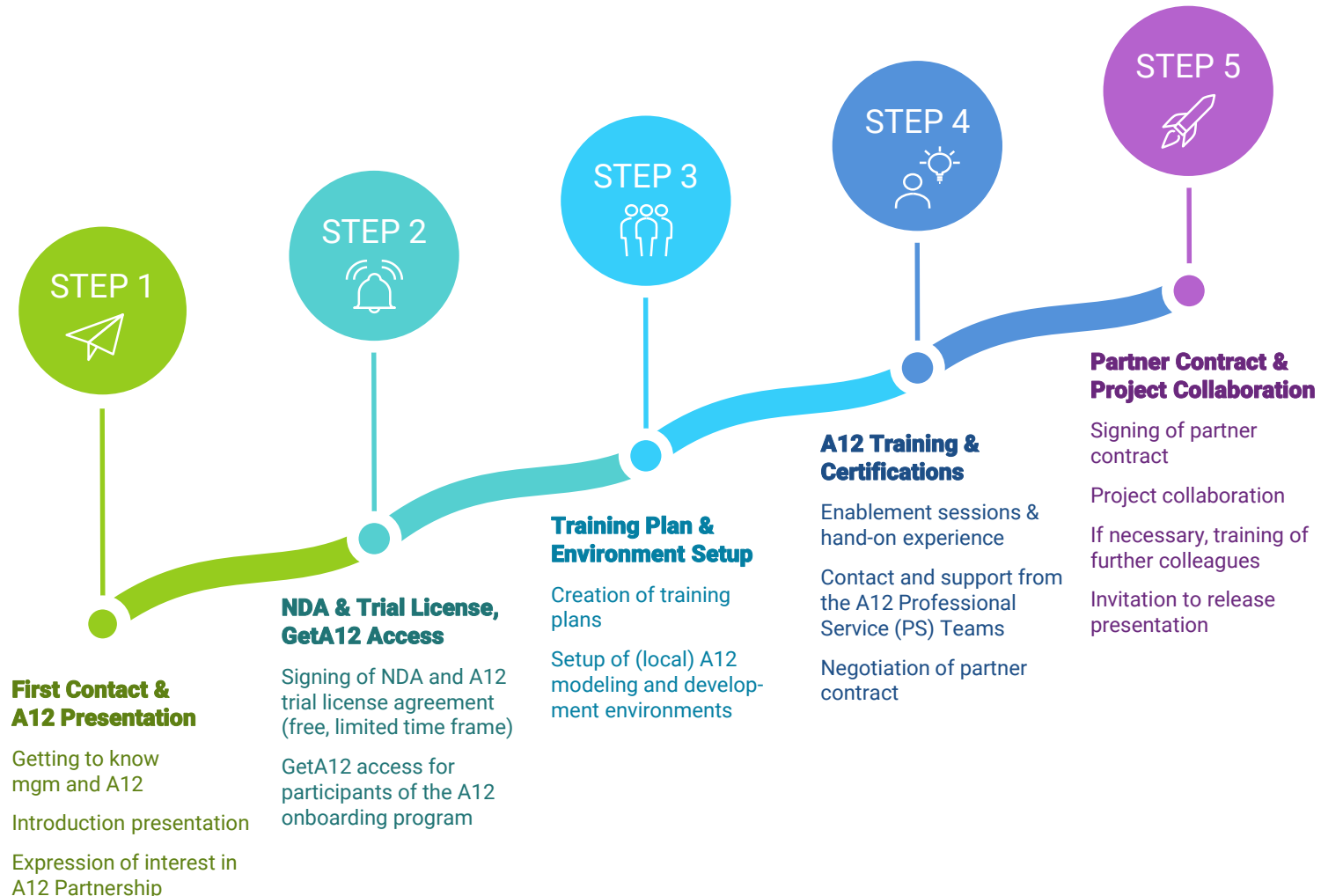
How to join

There is no better time to become an A12 partner than today!

mgm's strategy is to deliver and ensure digital sovereignty for companies and public authorities.

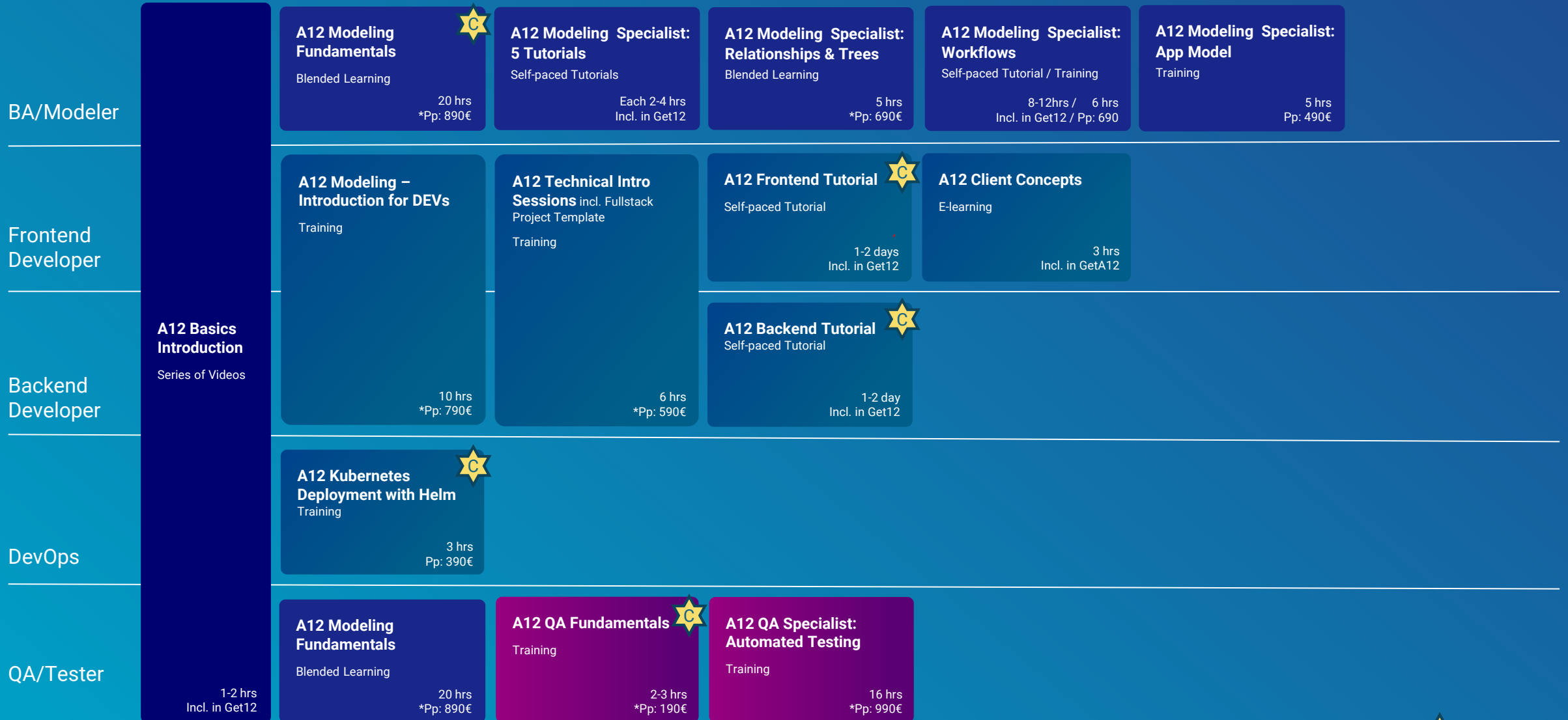
When joining forces with businesses like yours can we deliver on the promise:

Create robust, secure and sustainable enterprise applications more efficiently and innovatively throughout their entire life cycle – based on the A12 Platform.



A12 Enablement Path

There is a growing catalog of tutorials and training available for A12 users. The overview below shows the recommended paths for various different types of A12 users to become proficient in working with the platform.



Ensure high implementation quality of projects



With A12, we have created an open technical platform and a very efficient methodology for individual software development. To bring this approach to a wider audience, we rely on competent partners.

Our partner program aims to provide them with all the resources they need and empower them to ensure high implementation quality of A12 projects.

**Dr. Daniel Brodkorb,
Member of the management board of mgm**



Join us now!



Contact:

Hanna Purschke

Email:

partnermanagement@mgm-tp.com

mgm technology partners GmbH

Taunusstr. 23
80807 München

Tel +49 89 / 358 680-0

www.mgm-tp.com
info@mgm-tp.com

